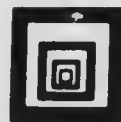


**CIHM
Microfiche
Series
(Monographs)**

**ICMH
Collection de
microfiches
(monographies)**



Canadian Institute for Historical Microreproductions / Institut canadien de microreproductions historiques

© 1999

Technical and Bibliographic Notes / Notes techniques et bibliographiques

The Institute has attempted to obtain the best original copy available for filming. Features of this copy which may be bibliographically unique, which may alter any of the images in the reproduction, or which may significantly change the usual method of filming are checked below.

- Coloured covers / Couverture de couleur
- Covers damaged / Couverture endommagée
- Covers restored and/or laminated / Couverture restaurée et/ou pelliculée
- Cover title missing / Le titre de couverture manque
- Coloured maps / Cartes géographiques en couleur
- Coloured ink (i.e. other than blue or black) / Encre de couleur (i.e. autre que bleue ou noire)
- Coloured plates and/or illustrations / Planches et/ou illustrations en couleur
- Bound with other material / Relié avec d'autres documents
- Only edition available / Seule édition disponible
- Tight binding may cause shadows or distortion along interior margin / La reliure serrée peut causer de l'ombre ou de la distorsion le long de la marge intérieure.
- Blank leaves added during restorations may appear within the text. Whenever possible, these have been omitted from filming / Il se peut que certaines pages blanches ajoutées lors d'une restauration apparaissent dans le texte, mais, lorsque cela était possible, ces pages n'ont pas été filmées.
- Additional comments / Commentaires supplémentaires: Continuous pagination.

L'Institut a microfilmé le meilleur exemplaire qu'il lui a été possible de se procurer. Les détails de cet exemplaire qui sont peut-être uniques du point de vue bibliographique, qui peuvent modifier une image reproduite, ou qui peuvent exiger une modification dans la méthode normale de filmage sont indiqués ci-dessous.

- Coloured pages / Pages de couleur
- Pages damaged / Pages endommagées
- Pages restored and/or laminated / Pages restaurées et/ou pelliculées
- Pages discoloured, stained or foxed / Pages décolorées, tachetées ou piquées
- Pages detached / Pages détachées
- Showthrough / Transparence
- Quality of print varies / Qualité inégale de l'impression
- Includes supplementary material / Comprend du matériel supplémentaire
- Pages wholly or partially obscured by errata slips, tissues, etc., have been refilmed to ensure the best possible image / Les pages totalement ou partiellement obscurcies par un feuillet d'errata, une pelure, etc., ont été filmées à nouveau de façon à obtenir la meilleure image possible.
- Opposing pages with varying colouration or discolourations are filmed twice to ensure the best possible image / Les pages s'opposant ayant des colorations variables ou des décolorations sont filmées deux fois afin d'obtenir la meilleure image possible.

This item is filmed at the reduction ratio checked below / Ce document est filmé au taux de réduction indiqué ci-dessous.

	10x		14x		18x		22x		26x		30x	
<input type="checkbox"/>	<input type="checkbox"/>	<input type="checkbox"/>	<input type="checkbox"/>	<input type="checkbox"/>	<input type="checkbox"/>	<input type="checkbox"/>	<input type="checkbox"/>	<input type="checkbox"/>	<input type="checkbox"/>	<input type="checkbox"/>	<input type="checkbox"/>	<input type="checkbox"/>
	12x		16x		20x		24x		28x		32x	

The copy filmed here has been reproduced thanks to the generosity of:

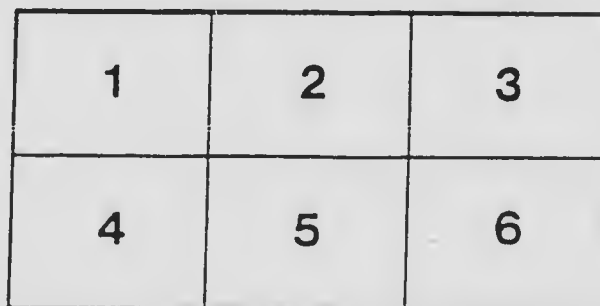
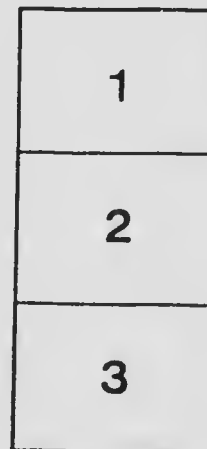
École polytechnique,
Université de Montréal,
Bibliothèque

The images appearing here are the best quality possible considering the condition and legibility of the original copy and in keeping with the filming contract specifications.

Original copies in printed paper covers are filmed beginning with the front cover and ending on the last page with a printed or illustrated impression, or the back cover when appropriate. All other original copies are filmed beginning on the first page with a printed or illustrated impression, and ending on the last page with a printed or illustrated impression.

The last recorded frame on each microfiche shell contain the symbol \rightarrow (meaning "CONTINUED"), or the symbol ∇ (meaning "END"), whichever applies.

Maps, plates, charts, etc., may be filmed at different reduction ratios. Those too large to be entirely included in one exposure are filmed beginning in the upper left hand corner, left to right and top to bottom, as many frames as required. The following diagrams illustrate the method:



L'exemplaire filmé fut reproduit grâce à la générosité de:

École polytechnique,
Université de Montréal,
Bibliothèque

Les images suivantes ont été reproduites avec le plus grand soin, compte tenu de la condition et de la netteté de l'exemplaire filmé, et en conformité avec les conditions du contrat de filmage.

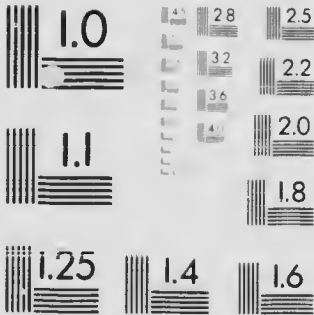
Les exemplaires originaux dont la couverture en papier est imprimée sont filmés en commençant par le premier plat et en terminant soit par la dernière page qui comporte une empreinte d'impression ou d'illustration, soit par le second plat, selon le cas. Tous les autres exemplaires originaux sont filmés en commençant par la première page qui comporte une empreinte d'impression ou d'illustration et en terminant par la dernière page qui comporte une telle empreinte.

Un des symboles suivants apparaîtra sur la dernière image de chaque microfiche, selon le cas: le symbole \rightarrow signifie "A SUIVRE", le symbole ∇ signifie "FIN".

Les cartes, planches, tableaux, etc., peuvent être filmés à des taux de réduction différents. Lorsque le document est trop grand pour être reproduit en un seul cliché, il est filmé à partir de l'angle supérieur gauche, de gauche à droite, et de haut en bas, en prenant le nombre d'images nécessaire. Les diagrammes suivants illustrent la méthode.

MICROCOPY RESOLUTION TEST CHART

ANSI and ISO TEST CHART No. 2



APPLIED IMAGE Inc

260 North Main Street
Rochester, NY 14609
716/462-6294

RECEIVED
 1915

PUBLICATIONS
 OF THE
DOMINION OBSERVATORY

OTTAWA, CANADA

Vol. IV, No. 4

ORBIT OF THE SPECTROSCOPIC BINARY π ARIETIS

BY REYNOLD K. YOUNG, Ph.D.

The binary character of π Arietis ($\alpha = 2^h 43^m \cdot 7$, $\delta = +17^\circ 3'$, mag. 5.30, type B5) was announced by Adams in the *Astrophysical Journal*, Vol. 35, p. 173. The present orbit is based on fifty spectrograms secured during the years 1914, 1915, 1916 and 1917.

The character of the spectrum prevents accurate determination of the orbital elements from any reasonable number of observations. The range is not very large, the lines are of poor quality, and measures of them subject to considerable uncertainty. So that the number of plates is inadequate to provide accurate values for the eccentricity and the longitude of periastron. The wave-lengths of the lines used are given in Table I. On account of their poor character, they were not adjusted to make the sum of the residuals zero. The material to do this, however, can be found in the table of measures.

TABLE I

λ	λ	λ
3933.825	4131.047	4388.100
4026.352	4143.928	4471.676
4101.890	4267.301	4481.400
4121.016	4340.634	

CA1

MT 403 54040-1

PO4-04

MT 403

44-04

TABLE II
OBSERVATIONS OF π ARIETIS

Plate	Observer*	Date	Julian Day	Velocity	Weight	Phase from J. D. 2,420,370	O-C
Mt. Wilson		1910, Dec. 21	2,419,030.693	- 9		1.885	-2
"		1911, Jan. 19	056.700	-12		0.914	0
"		Feb. 10	078.660	+32		3.400	-1
"		Dec. 12	383.625	+ 7		0.219	-6
6310	H	1911, Aug. 25	2,420,370.810	- 5.9	1.0	0.810	+3
6380	H	Sept 15	391.795	+11.5	1.5	2.525	0
6418	C	" 21	397.785	-15.4	1.5	0.807	-6
6435	Y	" 27	403.885	+36.4	1.5	3.053	+6
6450	C	" 30	406.854	+ 1.8	1.5	2.168	-1
6482	H	Oct. 4	410.768	+ 7.2	1.0	2.228	+2
6571	C ¹	Nov. 23	460.689	- 5.9	1.0	2.017	-1
7406	Y	1915, Nov. 13	815.762	+ 5.2	0.5	2.552	-11
7417	H	" 17	819.784	+24.1	1.0	2.720	+2
7428	Y	" 24	826.641	- 2.8	0.5	1.860	+5
7431	H	" 25	827.578	+26.6	1.0	2.806	+2
7452	P	Dec. 20	852.524	- 5.3	1.5	0.674	-1
7457	Y	" 28	860.591	- 9.5	0.5	1.133	+6
7480	H	1916, Jan. 13	876.507	-17.1	1.0	1.633	-4
7806	Y	Sept. 9	2,421,116.868	+29.8	1.0	3.046	0
7825	Y	" 30	137.862	-21.0	1.0	0.916	-9
7839	Y	Oct. 2	139.855	+30.9	1.0	2.900	+3
7846	H	" 3	140.872	+ 9.0	1.0	0.072	-12
7850	Y	" 4	141.703	-10.4	1.0	0.903	+1
7860	H	" 6	143.741	+27.6	1.0	2.944	-1
7866	Y	" 9	146.661	+ 5.2	1.0	2.007	+8
7867	Y	" 9	146.721	+ 4.1	0.5	2.067	+5
7871	Y	" 11	148.627	+13.6	1.0	0.119	-5
7872	Y	" 11	148.680	+23.3	1.0	0.172	+6
7880	Y	" 21	161.726	-11.0	0.5	1.656	+2
7883	Y	" 29	166.687	+13.0	0.5	2.763	+11
7885	Y	" 30	167.681	+34.8	0.5	3.757	+9
7891	Y	Nov. 5	173.589	- 7.6	1.0	1.957	-3
7892	Y	" 5	173.640	- 9.1	1.0	2.008	-6
7895	Y	" 6	174.741	+23.9	0.5	3.109	-7
7900	Y	" 14	182.703	+25.9	1.0	3.363	-7
7904	H	" 20	188.567	- 8.1	0.5	1.519	+7
7906	Y	" 20	188.704	-18.0	1.5	1.656	-5
7910	Y	" 21	189.582	+20.9	1.0	2.534	+5
7911	Y	" 21	189.639	+21.3	1.5	2.591	+3
7948	Y	Dec. 17	215.516	- 9.1	1.0	1.490	+6
7949	Y	" 17	215.573	-15.5	1.0	1.547	-1
7953	Y	" 19	217.535	+40.2	1.0	3.509	+8
7974	Y	" 30	228.454	+22.5	1.0	2.866	-4
7975	Y	" 36	228.501	+17.7	1.0	2.916	-10
7987	Y	1917, Jan. 12	241.518	+ 0.3	1.0	0.514	-1
7988	Y	" 12	241.575	+12.6	1.0	0.571	+13
7994	Y	" 16	245.532	-10.7	1.0	0.674	-6
7996	Y	" 16	245.608	+ 4.2	1.0	0.750	+11
8041	Y	Feb. 11	271.479	+26.8	1.0	3.497	-5
8042	Y	" 11	271.535	+32.7	1.5	3.553	+2
8051	Y	" 12	272.483	- 5.0	1.5	0.645	-1
8057	Y	" 15	275.533	+31.1	1.0	3.697	+3
8062	Y	" 18	278.490	+25.7	1.5	2.800	+1
8097	Y	Mar. 6	294.503	+36.4	1.5	3.397	+4

* P=Plaskett; H=Harper; C=Cannon; P¹=Parker; Y=Yeung

MEASURES OF π ARIETIS

λ	6310		6380		6118		6435		6450		6482		6571	
	Vel.	Wt.	Vel.	Wt.	Vel.	Wt.	Vel.	Wt.	Vel.	Wt.	Vel.	Wt.	Vel.	Wt.
3933-825					- 32.6	$\frac{1}{4}$	+ 12.7	$\frac{1}{4}$	- 13.6	$\frac{1}{4}$	- 12.8	$\frac{1}{4}$	+ 0.8	$\frac{1}{4}$
4026-352	- 10.4	$\frac{1}{4}$	- 3.4	$\frac{1}{4}$	- 26.8	$\frac{1}{4}$	+ 28.6	$\frac{1}{4}$	- 26.0	$\frac{1}{4}$	- 7.8	$\frac{1}{4}$	+ 4.7	$\frac{1}{4}$
4101-890	- 26.9	$\frac{1}{4}$	- 13.0	$\frac{1}{4}$	- 40.8	$\frac{1}{4}$	+ 23.2	$\frac{1}{4}$	- 26.0	$\frac{1}{4}$				
4143-928							+ 19.2	$\frac{1}{4}$			- 5.3	$\frac{1}{4}$		
4121-016											- 10.4	$\frac{1}{4}$		
4340-634	- 19.1	$\frac{1}{4}$	- 7.8	$\frac{1}{4}$	- 39.4	$\frac{1}{4}$	+ 7.8	$\frac{1}{4}$	+ 2.8	$\frac{1}{4}$	- 9.0	$\frac{1}{4}$	+ 10.6	$\frac{1}{4}$
4388-400	- 37.3	$\frac{1}{4}$												
4471-676	- 48.9	$\frac{1}{4}$	- 9.2	$\frac{1}{4}$	- 37.7	$\frac{1}{4}$	+ 13.6	$\frac{1}{4}$	- 23.5	$\frac{1}{4}$	+ 14.2	$\frac{1}{4}$	- 3.7	$\frac{1}{4}$
4481-400	- 52.3	$\frac{1}{4}$	- 7.4	$\frac{1}{4}$	- 38.7	$\frac{1}{4}$			- 15.0	$\frac{1}{4}$	- 19.9	$\frac{1}{4}$	+ 6.2	$\frac{1}{4}$
Weighted mean	-33.60		- 8.46		-36.00		+17.52		-15.44		- 8.24		+ 3.70	
V_a	+27.82		+22.80		+20.79		+18.49		+17.30		+15.66		- 9.22	
V_d	+ 0.11		+ 0.09		+ 0.09		- 0.14		- 0.10		+ 0.04		- 0.08	
Curv.	- 0.28		- 0.28		- 0.28		- 0.28		- 0.28		- 0.28		- 0.28	
Radial Velocity	- 5.9		+ 14.5		-15.4		+36.4		+ 1.8		+ 7.2		- 5.9	

MEASURES OF π ARIETIS—*Continued*

λ	7406		7417		7428		7431		7452		7457		7480	
	Vel.	Wt.	Vel.	Wt.	Vel.	Wt.	Vel.	Wt.	Vel.	Wt.	Vel.	Wt.	Vel.	Wt.
3933-825									+ 12.0	$\frac{1}{2}$			+ 31.6	$\frac{1}{2}$
4026-352			+ 28.3	$\frac{1}{2}$			+ 41.5	$\frac{1}{2}$	+ 29.6	$\frac{1}{2}$	+ 39.6	$\frac{1}{2}$	+ 36.6	$\frac{1}{2}$
1101-890			+ 31.7	$\frac{1}{2}$	+ 13.5	$\frac{1}{2}$			+ 26.1	$\frac{1}{2}$	+ 12.1	$\frac{1}{2}$	00.0	$\frac{1}{2}$
1113-928			+ 38.7	$\frac{1}{2}$									+ 27.1	$\frac{1}{2}$
1267-301			+ 38.5	$\frac{1}{2}$										
1310-631	+ 7.3	$\frac{1}{2}$	+ 41.6	$\frac{1}{2}$	- 6.2	$\frac{1}{2}$	+ 27.1	$\frac{1}{2}$	+ 31.5	$\frac{1}{2}$	+ 3.9	$\frac{1}{2}$	+ 4.5	$\frac{1}{2}$
1388-100	+ 1.2	$\frac{1}{2}$	+ 25.7	$\frac{1}{2}$			+ 38.0	$\frac{1}{2}$	+ 13.5	1				
4471-676	+ 31.0	$\frac{1}{2}$	- 2.5	$\frac{1}{2}$	+ 17.8	$\frac{1}{2}$	+ 37.9	1	+ 1.9	1	+ 3.8	$\frac{1}{2}$	- 11.2	$\frac{1}{2}$
1181-400	- 1.2	$\frac{1}{2}$	+ 26.3	$\frac{1}{2}$	+ 3.1	$\frac{1}{2}$	+ 51.1	$\frac{1}{2}$					+ 4.4	$\frac{1}{2}$
1131-017							+ 18.2	$\frac{1}{2}$						
Weighted mean	+9.57		+30.66		+7.05		+36.82		+16.00		+14.85		+11.31	
V_a	-4.00		- 6.08		-9.57		-10.02		-21.17		-21.01		-28.11	
V_s	-0.15		- 0.21		+0.01		+ 0.11		+ 0.12		- 0.07		+ 0.01	
Curv.	-0.28		- 0.28		-0.28		- 0.28		- 0.28		- 0.28		- 0.28	
Radial Velocity	+5.2		+24.1		-2.8		+26.6		- 5.3		- 9.5		-17.1	

MEASURES OF π ARIETIS—Continued

λ	7806		7825		7839		7846		7850		7860		7866	
	Vel.	Wt.	Vel.	Wt.	Vel.	Wt.	Vel.	Wt.	Vel.	Wt.	Vel.	Wt.	Vel.	Wt.
3933·825			- 46·1	$\frac{1}{2}$										
4026·352	+ 13·0	$\frac{1}{2}$	- 19·4	$\frac{1}{2}$	+ 28·6	$\frac{1}{2}$			- 23·4	$\frac{1}{2}$	+ 4·3	$\frac{1}{2}$		
4101·890			- 36·2	$\frac{1}{2}$	+ 19·6	$\frac{1}{2}$			- 11·8	$\frac{1}{2}$	+ 10·2	$\frac{1}{2}$	+ 19·5	$\frac{1}{2}$
4121·016									- 38·7	$\frac{1}{2}$				
4143·928	- 6·2	$\frac{1}{2}$											+ 3·2	$\frac{1}{2}$
4267·301			- 28·7	$\frac{1}{2}$									+ 19·2	$\frac{1}{2}$
4340·634	- 11·3	$\frac{1}{2}$	- 46·2	$\frac{1}{2}$	+ 19·2	$\frac{1}{2}$	- 19·1	$\frac{1}{2}$	- 14·6	$\frac{1}{2}$			- 2·3	$\frac{1}{2}$
4388·100	- 4·7	$\frac{1}{2}$	- 42·0	$\frac{1}{2}$	+ 12·8	$\frac{1}{2}$	+ 11·6	$\frac{1}{2}$	- 51·3	$\frac{1}{2}$			+ 7·4	$\frac{1}{2}$
4471·676	+ 29·7	$\frac{1}{2}$	- 44·3	$\frac{1}{2}$	+ 1·2	$\frac{1}{2}$	- 7·4	$\frac{1}{2}$	- 3·7	$\frac{1}{2}$	+ 9·8	$\frac{1}{2}$	+ 7·4	$\frac{1}{2}$
4481·400	+ 13·7	$\frac{1}{2}$	- 32·4	$\frac{1}{2}$	+ 8·7	$\frac{1}{2}$	- 10·6	$\frac{1}{2}$	- 33·1	$\frac{1}{2}$	+ 28·7	$\frac{1}{2}$	- 11·2	$\frac{1}{2}$
Weighted mean	+ 5·70		- 37·70		+ 15·01		- 6·38		- 25·67		+ 13·25		- 8·00	
V_0	+ 24·42		+ 17·09		+ 16·28		+ 15·82		+ 15·45		+ 14·58		+ 13·27	
V_2	- 0·01		- 0·11		- 0·42		- 0·13		- 0·14		+ 0·09		+ 0·20	
Curv.	- 0·28		- 0·28		- 0·28		- 0·28		- 0·28		- 0·28		- 0·28	
Radial Velocity	+ 29·8		- 21·0		+ 30·9		+ 9·0		- 10·4		+ 27·6		+ 5·2	

MEASURES OF π ARCTIS—Continued

λ	7867		7871		7872		7880		7883		7885		7891			
	Vol.	Wt.	Vol.	Wt.	Vol.	Wt.	Vol.	Wt.	Vol.	Wt.	Vol.	Wt.	Vol.	Wt.		
3933-825														+ 7.2	1/4	
4026-352	+ 5.2	1/2			+ 6.1	1/2								- 3.0	1/4	
4113-928														- 5.3	1/4	
4340-634			- 6.7	1/2	+ 12.1	1/2	- 28.2	1/2	+ 48.0	1/2	+ 32.2	1/2	+ 33.8	1/2	- 24.3	1/4
4388-100			+ 4.6	1/2	+ 12.2	1/2			- 46.3	1/2				- 9.3	1/2	
4471-676	- 11.9	1/2	- 9.8	1/2			+ 1.2	1/2	+ 4.9	1/2	+ 3.7	1/2		- 12.4	1/2	
4481-400	- 3.0	1/2	+ 17.6	1/2	+ 12.6	1/2	- 23.2	1/2	+ 32.4	1/2	+ 48.6	1/2		+ 11.3	1/2	
4267-301														+ 10.1	1/4	
Weighted mean	- 8.95		+ 1.42		+ 11.44		- 16.73		+ 9.75		+ 32.07			- 7.37		
V_d	+ 13.24		+ 12.33		+ 12.33		+ 5.98		+ 3.45		+ 2.97			- 0.13		
V_d	- 0.10		- 0.41		- 0.14		+ 0.01		+ 0.06		+ 0.06			+ 0.20		
Curv.	- 0.28		- 0.28		- 0.28		- 0.28		- 0.28		- 0.28			- 0.28		
Radial Velocity	+ 1.1		+ 13.6		+ 23.3		- 11.0		+ 13.0		+ 31.8			- 7.6		

MEASURES OF π ARIETIS—Continued

λ	7892		7895		7900		7904		7906		7910		7911	
	Vel.	Wt.	Vel.	Wt.	Vel.	Wt.	Vel.	Wt.	Vel.	Wt.	Vel.	Wt.	Vel.	Wt.
3933.825									+ 3.2	$\frac{1}{2}$	+ 35.2	$\frac{1}{2}$	+ 30.2	$\frac{1}{2}$
4026.352													+ 24.0	$\frac{1}{2}$
4101.890	- 1.4	$\frac{1}{2}$			+ 32.2	$\frac{1}{2}$			- 13.5	$\frac{1}{2}$	+ 25.7	$\frac{1}{2}$	+ 38.2	$\frac{1}{2}$
4143.928	- 15.4	$\frac{1}{2}$											+ 31.1	$\frac{1}{2}$
4340.634	- 15.8	$\frac{1}{2}$	+ 21.4	$\frac{1}{2}$					- 10.2	1	+ 50.9	$\frac{1}{2}$	+ 31.1	$\frac{1}{2}$
4388.100			+ 10.8	$\frac{1}{2}$	+ 40.8	$\frac{1}{2}$							
4471.676	0.0	$\frac{1}{2}$	+ 29.1	$\frac{1}{2}$	+ 34.6	$\frac{1}{2}$	+ 1.2	$\frac{1}{2}$	- 11.2	$\frac{1}{2}$	+ 28.8	$\frac{1}{2}$	+ 12.4	$\frac{1}{2}$
4481.400	- 11.2	$\frac{1}{2}$	+ 8.7	$\frac{1}{2}$	+ 16.3	$\frac{1}{2}$	- 1.2	$\frac{1}{2}$	- 16.3	$\frac{1}{2}$	+ 6.2	$\frac{1}{2}$	+ 31.3	$\frac{1}{2}$
4121.016													+ 31.7	$\frac{1}{2}$
Weighted mean	-8.76		+25.00		+31.02		+0.00		-9.70		+29.32		+29.97	
V_r	-0.10		- 0.74		- 4.86		-7.96		-7.97		- 8.41		- 8.45	
V_d	+0.09		- 0.09		+ 0.00		+0.11		- 0.09		+ 0.08		+ 0.04	
Curv.	-0.28		- 0.23		- 0.28		-0.28		-0.28		- 0.28		- 0.28	
Radial Velocity	-9.1		+23.9		+25.9		-8.1		-18.0		+20.9		+21.3	

MEASURES OF π ARIETIS—*Continued*

λ	7918		7919		7953		7971		7975		7987		7988	
	Vel.	Wt.	Vel.	Wt.	Vel.	Wt.	Vel.	Wt.	Vel.	Wt.	Vel.	Wt.	Vel.	Wt.
1026-352							+ 56.7	$\frac{1}{2}$	+ 48.8	$\frac{1}{2}$				
1101-890							+ 33.6	$\frac{1}{2}$					+ 42.0	$\frac{1}{2}$
4310-631	+ 9.0	$\frac{1}{2}$	+ 12.0	$\frac{1}{2}$	+ 59.5	$\frac{1}{2}$	+ 29.4	$\frac{1}{2}$	+ 49.4	$\frac{1}{2}$	+ 17.5	1	+ 27.7	$\frac{1}{2}$
4388-100	+ 23.1	$\frac{1}{2}$												
4471-676	+ 16.2	$\frac{1}{2}$	- 0.6	$\frac{1}{2}$	+ 63.5	$\frac{1}{2}$	+ 65.8	$\frac{1}{2}$	+ 38.6	$\frac{1}{2}$	+ 39.2	$\frac{1}{2}$	+ 42.5	$\frac{1}{2}$
4481-100	- 3.2	$\frac{1}{2}$	+ 4.1		+ 63.8	$\frac{1}{2}$	+ 51.9	$\frac{1}{2}$	+ 35.1	$\frac{1}{2}$	+ 40.0	$\frac{1}{2}$	+ 54.4	$\frac{1}{2}$
Weighted mean	+11.35		+ 5.26		+62.26		+47.48		+42.73		+28.55		+40.90	
V_a	-20.32		-20.32		-21.81		-21.80		-24.80		-27.95		-27.95	
V_d	+ 0.12		+ 0.09		+ 0.09		+ 0.45		+ 0.09		\pm 0.00		+ 0.05	
Curv.	- 0.28		- 0.28		- 0.28		- 0.28		- 0.28		- 0.28		- 0.28	
Radial Velocity	- 9.1		-15.3		+40.2		+22.5		+17.7		+ 0.3		+12.7	

MEASURES OF π ARIETIS—Continued

λ	7994		7996		8011		8012		8051		8057		8062	
	Vel.	Wt.	Vel.	Wt.	Vel.	Wt.	Vel.	Wt.	Vel.	Wt.	Vel.	Wt.	Vel.	Wt.
3933.825							+ 58.3	$\frac{1}{2}$	+ 33.3	$\frac{1}{2}$				
4026.352	+ 33.2	$\frac{1}{4}$			+ 48.4	$\frac{1}{2}$	+ 52.7	$\frac{1}{2}$					+ 64.0	$\frac{1}{4}$
4101.890					+ 48.5	$\frac{1}{2}$			+ 20.0	$\frac{1}{2}$			+ 69.0	$\frac{1}{2}$
4143.928									+ 19.8	$\frac{1}{2}$			+ 32.4	$\frac{1}{2}$
4267.301									+ 22.4	$\frac{1}{2}$				
4340.634	+ 9.0	1	+ 30.0	$\frac{1}{2}$	+ 61.1	1	+ 56.6	$\frac{1}{2}$	+ 30.5	1	+ 51.5	$\frac{1}{2}$	+ 61.0	$\frac{1}{4}$
4388.100			+ 57.4	$\frac{1}{2}$	+ 62.0	$\frac{1}{2}$								
4471.676	+ 9.3	$\frac{1}{2}$	+ 18.6	$\frac{1}{2}$	+ 51.0	1	+ 73.7	$\frac{1}{2}$			+ 64.0	$\frac{1}{2}$	+ 42.9	$\frac{1}{2}$
4481.400	+ 20.7	$\frac{1}{4}$	+ 26.3	$\frac{1}{2}$	+ 71.4	$\frac{1}{2}$	+ 73.9	$\frac{1}{2}$	+ 19.4	$\frac{1}{2}$	+ 67.6	$\frac{1}{2}$	+ 48.8	$\frac{1}{2}$
Weighted mean	+18.05		+33.07		+56.94		+62.98		+25.13		+61.03		+55.90	
V_0	-28.38		-28.40		-29.82		-29.82		-29.74		-29.42		-29.82	
V_1	- 0.07		- 0.18		- 0.09		- 0.18		- 0.10		- 0.20		- 0.14	
Curv.	- 0.28		- 0.28		- 0.28		- 0.28		- 0.28		- 0.28		- 0.28	
Radial Velocity	-10.7		+ 4.2		+26.8		+32.7		- 5.0		+31.1		+25.7	

Table II gives the journal of observations. These were formed into thirteen normal places.

NORMIAL PLACES

	Julian Day	Phase from J. D. 2,420,370	Velocity	Weight	(O-C) ₁	(O-C) ₂	O-C Final
1	2,420,370	0.121	+15.30	0.6	-5.40	-3.89	-3.47
2	370	0.613	- 0.50	1.0	+1.95	+1.34	+1.59
3	370	0.765	- 7.90	0.9	+1.02	-0.38	-0.27
4	370	0.954	-14.50	0.5	+0.25	-1.64	-1.59
5	371	1.519	-11.50	0.5	+3.80	+3.40	+3.74
6	371	1.648	-16.50	0.6	-3.90	-3.86	-3.42
7	371	1.990	- 4.20	0.9	-1.42	-0.97	-0.36
8	372	2.171	+ 4.00	0.6	+0.75	+1.04	+1.55
9	372	2.552	+17.20	0.9	+1.34	+0.61	+0.76
10	372	2.795	+23.65	1.0	+0.73	-0.59	-0.69
11	373	3.008	+28.76	1.2	+0.91	-0.54	-0.81
12	373	3.436	+32.80	0.9	+0.85	+0.54	+0.41
13	373	3.635	+32.50	0.6	+2.30	+2.93	+3.05
					$\Sigma pv^2 = 47.7$	35.0	34.2

Preliminary elements were selected by trial and corrected by least-squares. The result of this solution is indicated in the residuals under headings (O-C)₁ and (O-C)₂. The reduction in Σpv^2 is satisfactory, but on computing the residuals from the observation equations they were found to differ from those computed from the ephemeris. To show the magnitude of the changes in the elements and indicate the degree of uncertainty which attaches to them, the two sets are given below.

1st.	2nd.
$P = 3.854$ days	3.854 days
$T = \text{J.D. } 2,420,370.55$	$2,420,370.375$
$e = 0.10$	0.030
$\omega = 105^\circ$	$89^\circ.05$
$K = 25$ km.	24.60 km.
$\gamma = +7.65$ km.	$+ 8.24$ km.

The main change is in the eccentricity, which was greatly over-estimated in the preliminary elements. In proceeding to a second solution ω was put at 90 degrees, and a small change made in T to correspond. The eccentricity was made 0.05, and the solution again carried through. The normal equations using Schlesinger's notation are:

$$\begin{aligned} 10.200r + 0.808\kappa - 1.249\pi + 0.705\epsilon - 0.652\tau &= -1.586 \\ + 4.863\kappa - 0.774\pi + 0.299\epsilon - 0.719\tau &= +1.114 \\ + 5.337\pi + 0.182\epsilon + 4.765\tau &= +0.352 \\ + 1.300\epsilon + 0.209\tau &= +0.425 \\ + 4.285\tau &= +0.190 \end{aligned}$$

whence,

$$\begin{array}{ll} \tau &= -5.54 & dT &= -0.125 \\ \epsilon &= +0.44 & de &= -0.008 \\ \pi &= +5.037 & d\omega &= -11.73 \\ \kappa &= +0.174 & dK &= +0.174 \\ r &= +0.063 & d\gamma &= -0.19 \end{array}$$

and the final elements with the probable errors become,

$$\begin{array}{ll} P &= 3.854 \text{ days} \\ e &= 0.042 & \pm 0.025 \\ T &= \text{J. D. } 2,420,370.259 & \pm 0.351 \text{ day} \\ \omega &= 78^\circ.27 & \pm 21^\circ.9 \\ K &= 24.77 \text{ km.} & \pm 0.70 \text{ km.} \\ \gamma &= +7.81 \text{ km.} \\ a \sin i &= 1,312,000 \text{ km.} \\ \frac{m_1^3 \sin^3 i}{(m+m_1)^2} &= 0.0061 \odot \end{array}$$

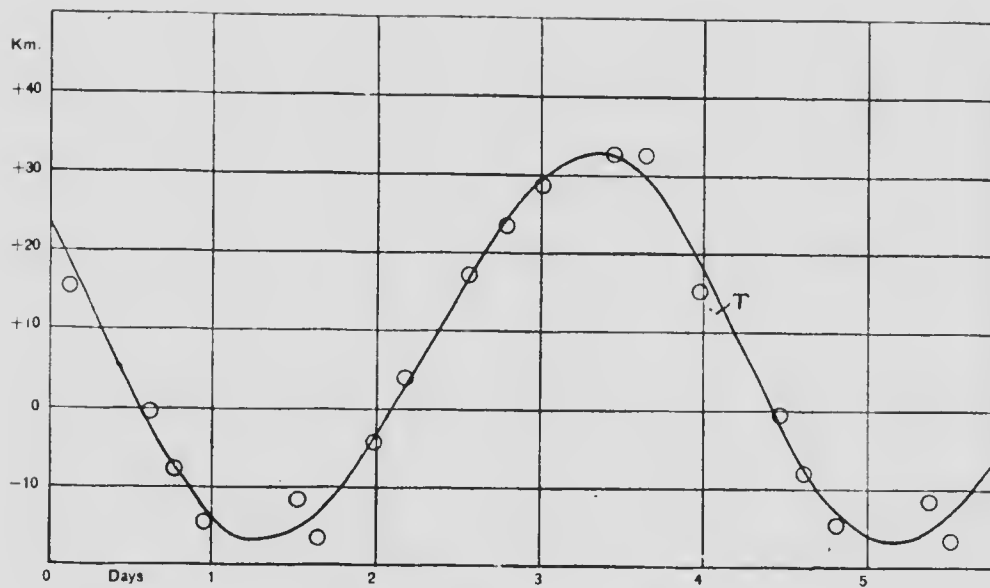
The residuals from these elements agree with the residuals from the observation equations to the nearest tenth of a kilometre. Comparison with the residuals given by the first solution shows that little has been gained, and the differences between the last two sets of elements are less than the probable errors.

The residuals given by the individual plates are tabulated under the heading (O-C) in the table of observations. The probable error of a single observation is 3.7 km.

Dominion Observatory

Ottawa

May, 1917.



Radial Velocity Curve of π Arietis

